

# Seek & Destroy

## Metallica

Gtrs 1&2



Tablature for the first section:

<b>T</b>		h							
<b>A</b>		7	8	7	h		5		9 7 7
<b>B</b>	0	0	0	0	7 8 7	0 8 7 7 0			9 9 8 7 5

Gtr 1 x8  
Gtr 2 Last 4 Only

Gtrs 1&2  
Verse on last 4



Tablature for the second section:

<b>T</b>									
<b>A</b>		5	7	5	7				5
<b>B</b>	0 0 0 0	5 7 5 7		7 5	7 6	0 0 0 0 0 0 0 0			0 0 0 0 7 6

Pre-Chorus



Tablature for the Pre-Chorus section:

<b>T</b>									
<b>A</b>		5	7	5	7	7 5		5	7
<b>B</b>	7 0 0 0	5 7 5 7		7 6 5	7 5 5	7 0 0 0		9 7 7	9 9 8 7 5

2nd Chorus, 4th Repeat to coda:

1st Chorus to coda: ☆  
3rd Chorus to coda: ⊘

Chorus



Tablature for the Chorus section:

<b>T</b>									
<b>A</b>	7	6	5	4					
<b>B</b>	5	4	3	2					

Bridge  
Double tempo

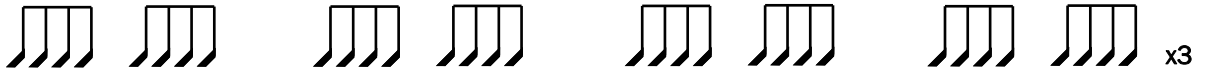


Tablature for the Bridge section:

<b>T</b>	4	4	4	4	4	4	4	4
<b>A</b>	1	1	1	1	1	1	1	1
<b>B</b>								



<b>T</b>				
<b>A</b>	5 7 7 7	5 7 7	4 7 7	3 2 0
<b>B</b>	0 0 0 0 0 0 0 0	0 0 0 0 0 0 0 0	0 0 0 0 0 0 0 0	3 2 0 3 0



<b>T</b>				
<b>A</b>	5 7 7	5 7 7	4 7 7	3 2 0
<b>B</b>	0 0 0 0 0 0 0 0	0 0 0 0 0 0 0 0	0 0 0 0 0 0 0 0	3 2 0 3 0

Gtr 1



<b>T</b>				
<b>A</b>	7	6 5	4	
<b>B</b>	5	4 3	2	
			0 0 0 0 0 0 0 0	0 0 0 0 0 0 0 0

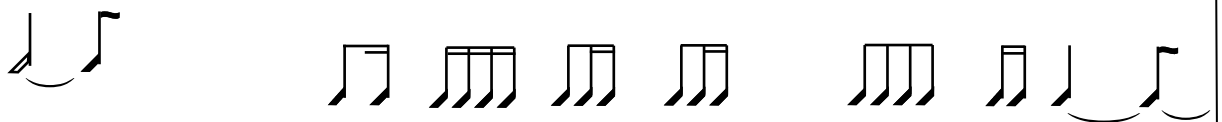
Gtr 2  
Solo



<b>T</b>		12 15	12 15p12 12 15p12 17p12 15p12 12 15p12 17p12	15 12 12 12
<b>A</b>	—	—	—	—
<b>B</b>				



<b>T</b>				
<b>A</b>	7	6 5	4	
<b>B</b>	5	4 3	2	
			0 0 0 0 0 0 0 0	0 0 0 0 0 0 0 0



<b>T</b>	(15) ↑		7 7 10p7 7 7	↑ ↓
<b>A</b>	—	—	10 10p7 10p7	9 7 7 9 (9)p7
<b>B</b>				9 9

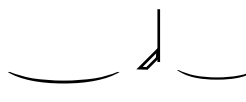
Gtr 1



<b>T</b>				
<b>A</b>	7	6 5	4	
<b>B</b>	5	4 3	2	

0 0 0 0 0 0 0 0 0 0 0 0 0 0 0 0

Gtr 2



<b>T</b>			17	15	16 15 14	15	14	15	↕ ↘ ↙ ↗
<b>A</b>	(9)	(9)	15	15	15	14	16	17	
<b>B</b>									



<b>T</b>				
<b>A</b>	7	6 5		
<b>B</b>	5	4 3		

5 7 7 7 0 0 0 0



<b>T</b>	(15)		20 20	23 20 18 22 19 19 21 21 17 15 19 16 14 17 14 12
<b>A</b>			23	
<b>B</b>				



<b>T</b>				
<b>A</b>	5		4	
<b>B</b>	5	7	7	4

0 0 0 0 0 0 0 0 0 0 0 0 0 0 3 2 0 3 0



<b>T</b>				
<b>A</b>	16 12 11 16 12 11 9 7 10p7 7 10p7	10 10p7 10p7 7	↕ ↘	
<b>B</b>			9 7 9 9 9 (9)p7	9 7 7 9

5 5

Gtr 1

<b>T</b>			
<b>A</b>			
<b>B</b>	5 7 7	5 7 7	4 7 7
	0 0 0 0 0 0 0 0	0 0 0 0 0 0 0 0	0 0 0 0 0 0 0 0
			3 2 0 3 0

Gtr 2

<b>T</b>				
<b>A</b>	7 9 7 7 9 9	7 9 9 p7 9 7	7 9 9 7 10 p7 9 7	7 9 p7 9 14 12
<b>B</b>	5 9 9		9	
	7			

<b>T</b>			
<b>A</b>			
<b>B</b>	5 7 7	5 7 7	4 7 7
	0 0 0 0 0 0 0 0	0 0 0 0 0 0 0 0	0 0 0 0 0 0 0 0
			3 2 0 3 0

<b>T</b>				
<b>A</b>	15 15p12 12 15 12 15p12 12 15	15 15p12 15 15 15	15 12 12 15p12	15 12 12 15p12
<b>B</b>	14		14	14 12 12 14p12
			14	14 12
				14 12 12 12
				15 15

<b>T</b>			
<b>A</b>			
<b>B</b>	5 7 7	5 7 7	4 7 7
	0 0 0 0 0 0 0 0	0 0 0 0 0 0 0 0	0 0 0 0 0 0 0 0



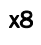
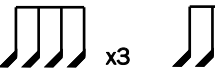


<b>T</b>		12 12 15 12 15 15	17 12 15p12
<b>A</b>	12 12 14 12 14 14	14 12 14 14	15 12 11 12 15p12
<b>B</b>	14 12 14 14		14 12

Gtr 1   **Gtrs 1&2**  
 Halve tempo   to coda: 😊

<b>T</b>									
<b>A</b>						2	—	(2)	
<b>B</b>						2	—	(2)	
	3	2	0	3	2	0	3	2	0
	3	2	0	3	2	0	3	2	0
	0	0	0	0	0	0	0	0	0

Outro      x4

<b>T</b>												
<b>A</b>	12	11	11	10	10	9	12	11	11	7	7	9
<b>B</b>	12	11	11	10	10	9	12	11	11	7	7	9
	10	9	9	8	8	7	10	9	9	5	5	7
	0	0	0	0	0	0	0	0	0	0	0	0

   x8  x3  

<b>T</b>												
<b>A</b>										9	7	7
<b>B</b>										9	9	8
	2	5	4	5	7	5	2	2	2	2	2	2
	2	5	4	5	7	5	2	2	2	2	2	2
	0	0	0	0	0	3	0	0	0	0	0	0

<b>T</b>				
<b>A</b>				
<b>B</b>				

<b>T</b>				
<b>A</b>				
<b>B</b>				